

HOOD INFORMATION - Job#3991506

HOOD NO.	TAG	MODEL	LENGTH	MAX. COOKING TEMP.	APPLIANCE DUTY	DESIGN CFM/ft	TOTAL EXH. CFM	EXHAUST PLENUM RISER(S)					HOOD CONSTRUCTION	HOOD CONFIG.	
								WIDTH	LENG.	HEIGHT	DIA.	CFM		END TO END	ROW
1		5424 V-ND-2	13' 0"	450 Deg.	Medium	105	1365	8"	8"	4"		682	430 SS	ALONE	ALONE
								8"	8"	4"		682	Where Exposed		

HOOD INFORMATION

HOOD NO.	TAG	TYPE	QTY.	FILTER(S)			EFFICIENCY @ 7 MICRONS	QTY.	LIGHT(S)		WIRE GUARD	LOCATION	SIZE	UTILITY CABINET(S)			FIRE SYSTEM PIPING	HOOD HANGING WGH
				HEIGHT	LENGTH				TYPE					TYPE	SIZE	MODEL #		
1		SS Baffle with Handles	9	16"	16"		30%	7	L55 Series E26		NO	Left	12"x54"x24"	Ansul R102	3.0	SC-11011002-FL	1 Light 1 Fan	714 LBS

HOOD OPTIONS

HOOD NO.	TAG	OPTION
1		FIELD WRAPPER 17.00" High Front, Left, Right BACKSPLASH 48.00" High X 168.00" Long 430 SS Horizontal RIGHT QUARTER END PANEL 23" Top Width, 0" Bottom Width, 23" High 430 SS LEFT QUARTER END PANEL 23" Top Width, 0" Bottom Width, 23" High 430 SS

Fire System Information - Job#3991506

FIRE SYSTEM NO.	Tag	TYPE	SIZE	FLOW POINTS	INSTALLATION	
					SYSTEM	LOCATION ON HOOD
1		Ansul R102	3.0	3	Fire Cabinet Left	Left

FAN ACCESSORIES

FAN UNIT NO.	TAG	EXHAUST			SUPPLY		
		GREASE CUP	GRAVITY DAMPER	WALL MOUNT	SIDE DISCHARGE	GRAVITY DAMPER	MOTORIZED DAMPER
1		YES					

CURB ASSEMBLIES

NO.	ON FAN	WEIGHT	ITEM	SIZE
1	# 1	44 LBS	Curb	23.000"W x 23.000"L x 26.000"H Vented Hinged

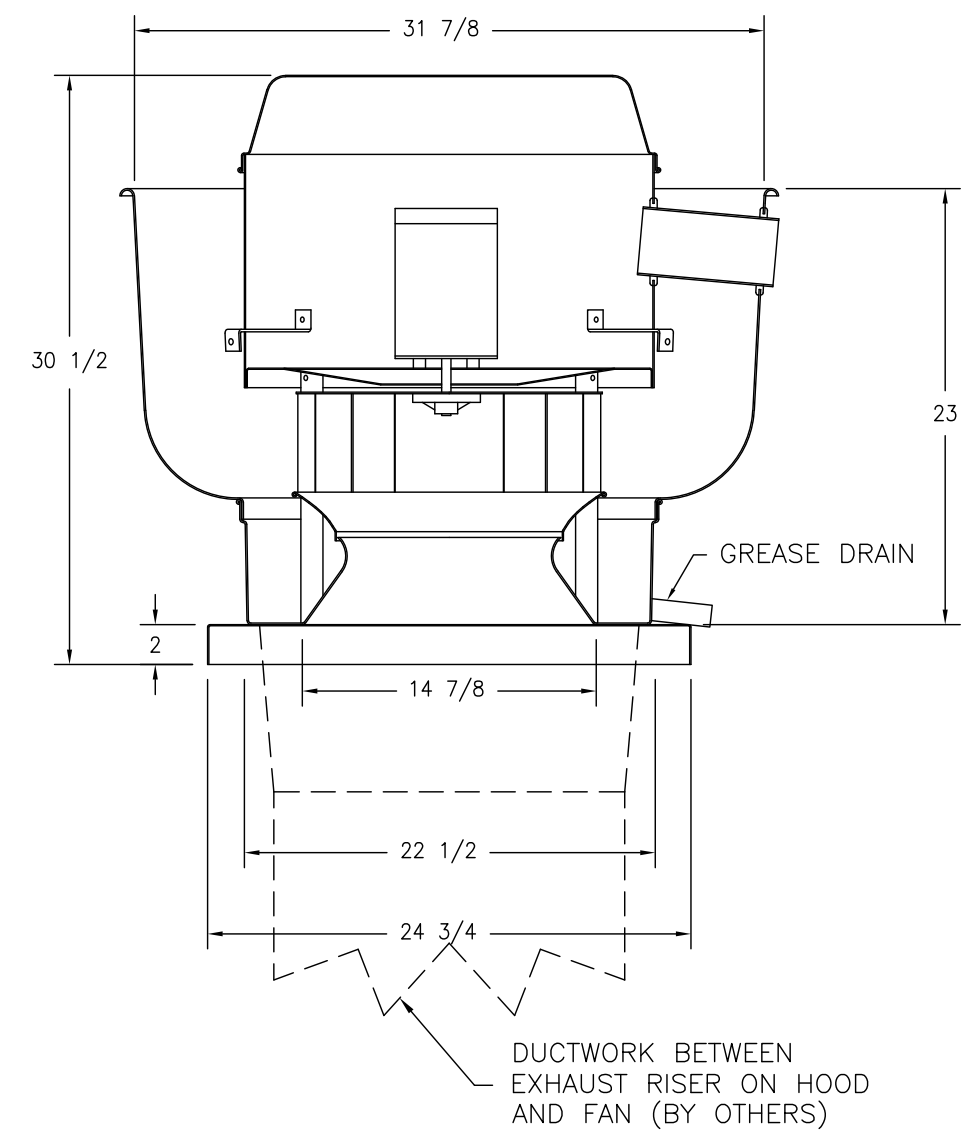
EXHAUST FAN INFORMATION - Job#3991506

FAN UNIT NO.	TAG	FAN UNIT MODEL #	CFM	ESP.	RPM	H.P.	B.H.P.	Ø	VOLT	FLA	DISCHARGE VELOCITY	WEIGHT (LBS.)	SONES
1		DU85HFA	1365	0.600	1022	0.750	0.2120	1	115	8.9	432 FPM	88	9.5

FAN OPTIONS

FAN UNIT NO.	TAG	OPTION (Qty. - Descr.)
1		1 - Grease Box 1 - ECM Wiring Package - Manual or 0-10VDC Reference Speed Control (TELCO Motor), CCW Rotation

FAN #1 DU85HFA - EXHAUST FAN



FEATURES:

- DIRECT DRIVE CONSTRUCTION (NO BELTS/PULLEYS)
- ROOF MOUNTED FANS
- RESTAURANT MODEL
- UL705 AND UL762 AND ULC-S645
- VARIABLE SPEED CONTROL
- INTERNAL WIRING
- WEATHERPROOF DISCONNECT
- THERMAL OVERLOAD PROTECTION (SINGLE PHASE)
- HIGH HEAT OPERATION 300°F (149°C)
- GREASE CLASSIFICATION TESTING

NORMAL TEMPERATURE TEST

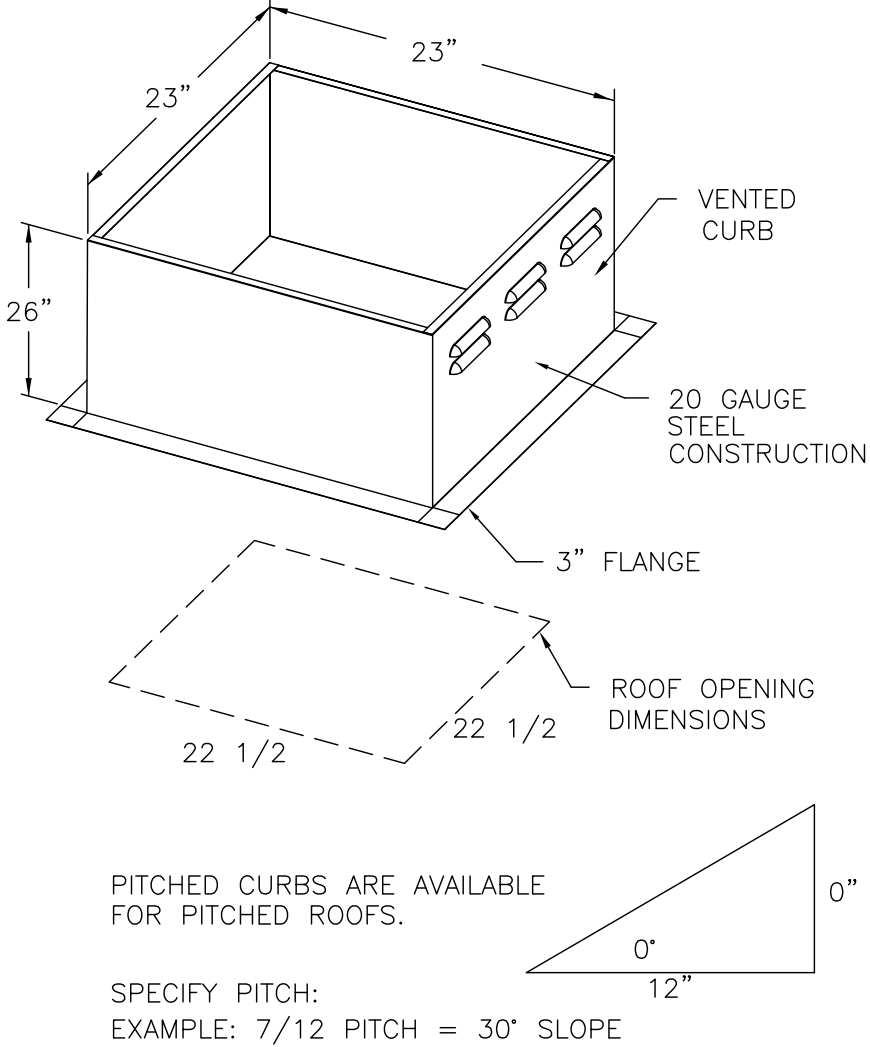
EXHAUST FAN MUST OPERATE CONTINUOUSLY WHILE EXHAUSTING AIR AT 300°F (149°C) UNTIL ALL FAN PARTS HAVE REACHED THERMAL EQUILIBRIUM, AND WITHOUT ANY DETERIORATING EFFECTS TO THE FAN WHICH WOULD CAUSE UNSAFE OPERATION.

ABNORMAL FLARE-UP TEST

EXHAUST FAN MUST OPERATE CONTINUOUSLY WHILE EXHAUSTING BURNING GREASE VAPORS AT 600°F (316°C) FOR A PERIOD OF 15 MINUTES WITHOUT THE FAN BECOMING DAMAGED TO ANY EXTENT THAT COULD CAUSE AN UNSAFE CONDITION.

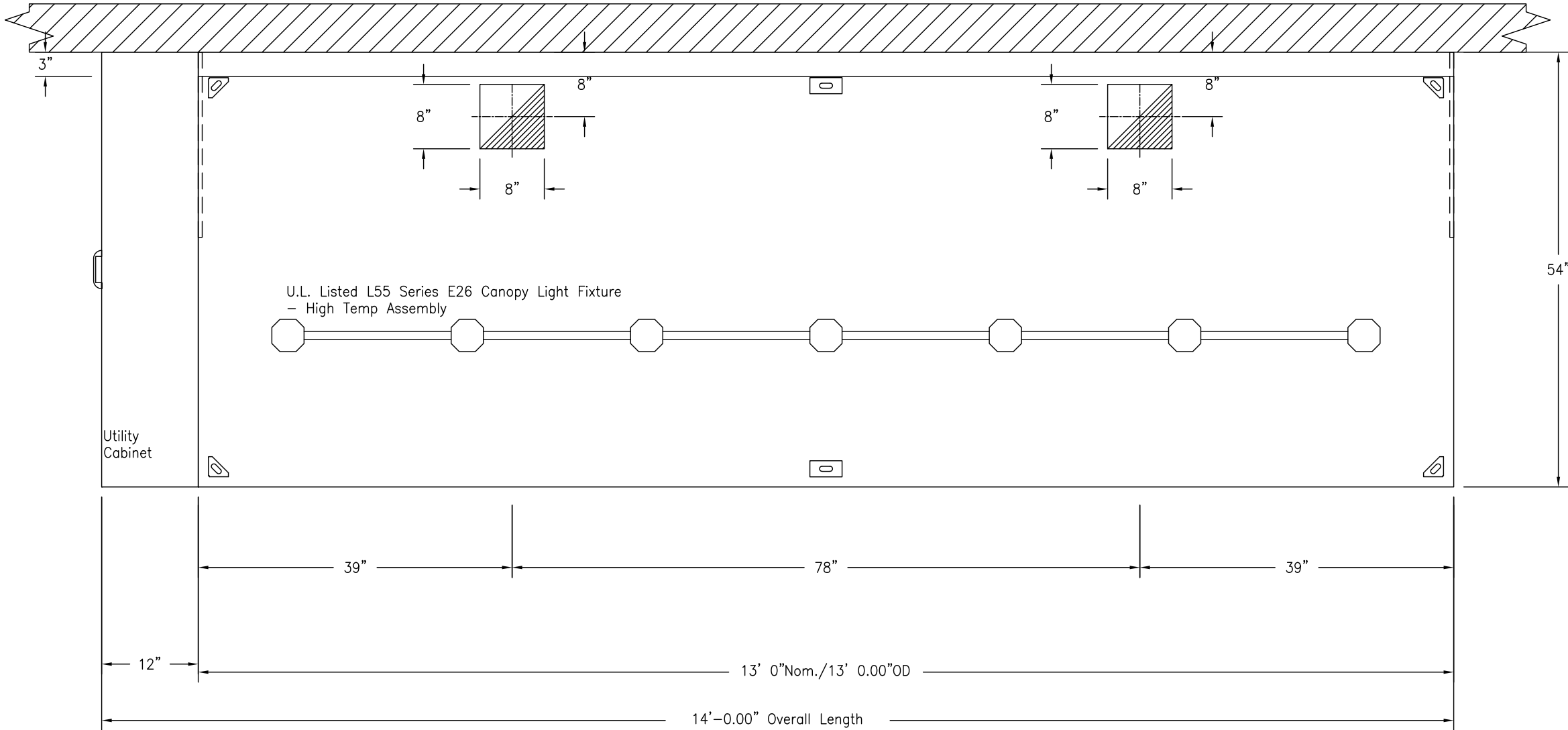
OPTIONS

GREASE BOX.
ECM WIRING PACKAGE - MANUAL OR 0-10VDC REFERENCE SPEED CONTROL (TELCO MOTOR), CCW ROTATION.



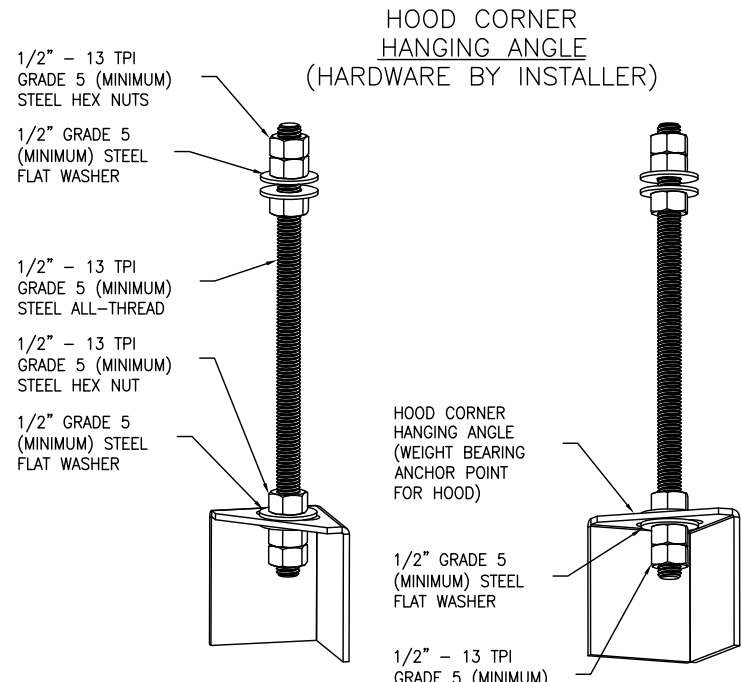
PITCHED CURBS ARE AVAILABLE FOR PITCHED ROOFS.

SPECIFY PITCH:
EXAMPLE: 7/12 PITCH = 30° SLOPE



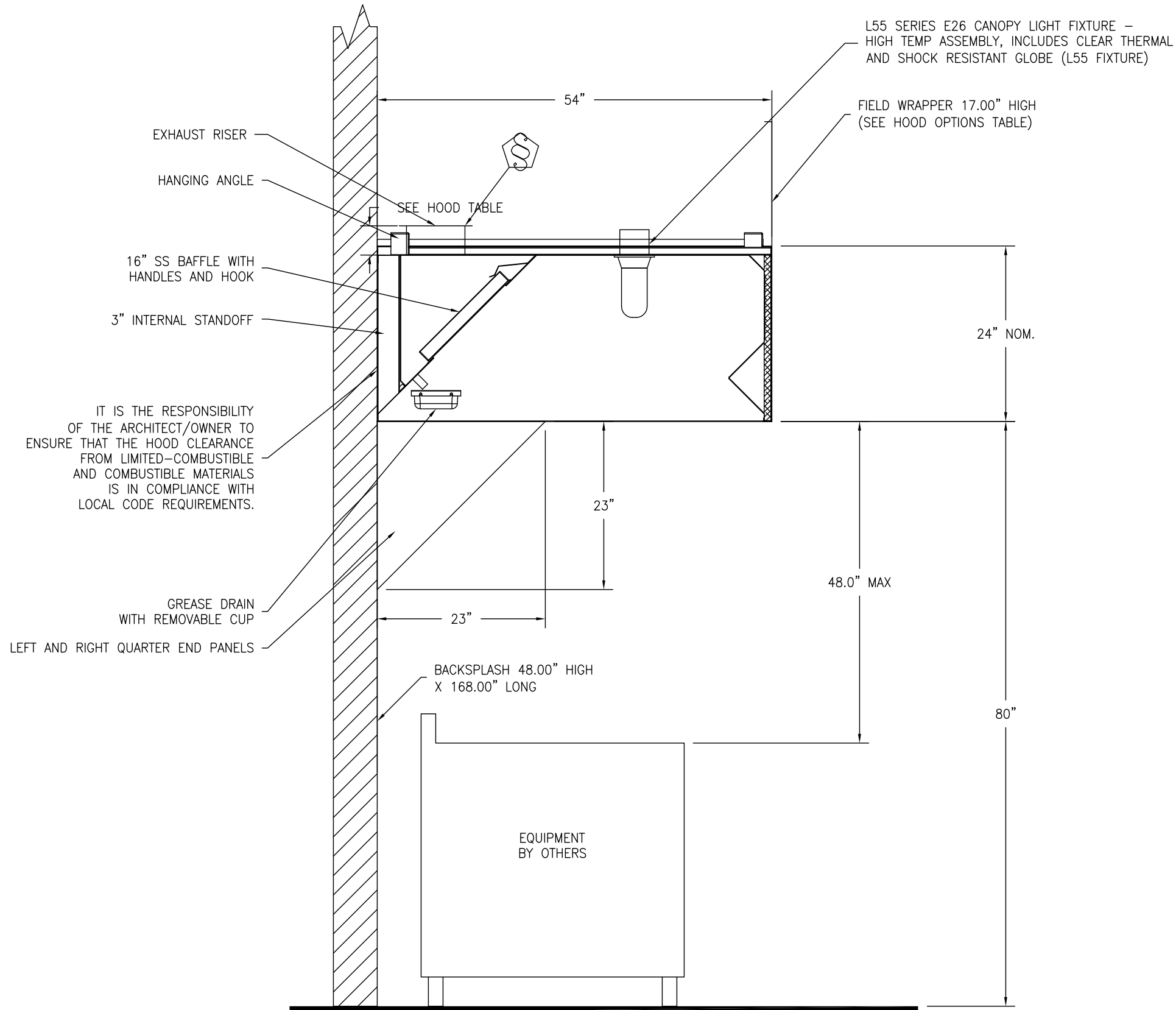
PLAN VIEW - Hood #1
13' 0.00" LONG 5424V-ND-2

NOTE: Additional hanging angles provided for hoods 12' and longer.



ASSEMBLY INSTRUCTIONS

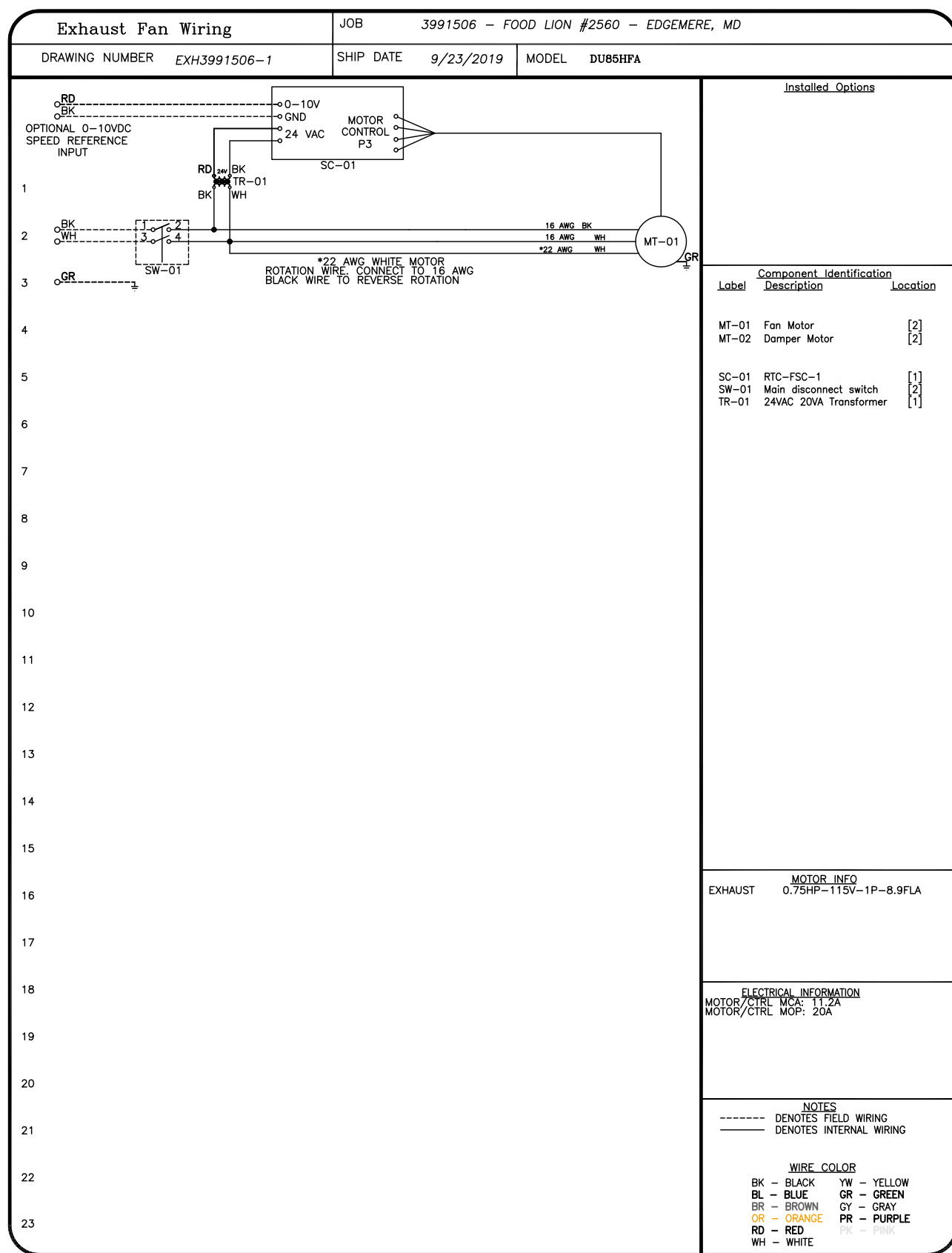
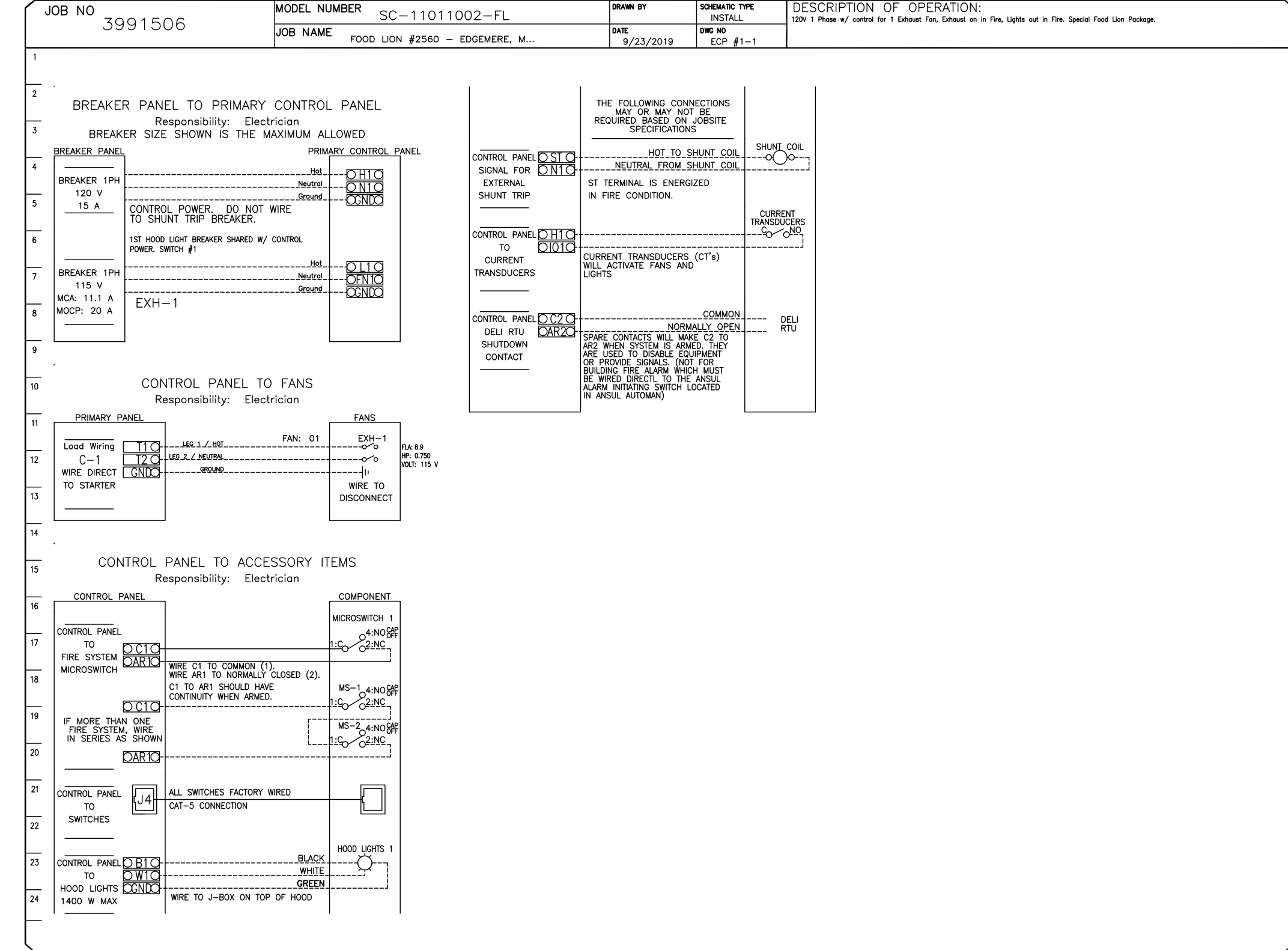
HANGING ANGLE MUST BE SUPPORTED WITH 1/2" - 13 TPI GRADE 5 (MINIMUM) ALL-THREAD. SANDWICH HANGING ANGLES AND CEILING ANCHOR POINTS WITH 1/2" GRADE 5 (MINIMUM) STEEL FLAT WASHERS AND 1/2" - 13 TPI GRADE 5 (MINIMUM) HEX NUTS AS SHOWN. MUST USE DOUBLED HEX NUT CONFIGURATION BENEATH HOOD HANGING ANGLES AND ABOVE CEILING ANCHORS. MAINTAIN 1/4" OF EXPOSED THREADS BENEATH BOTTOM HEX NUT. TORQUE ALL HEX NUTS TO 57 FT-LBS.



SECTION VIEW - MODEL 5424V-ND-2
HOOD - #1

ELECTRICAL PACKAGE - Job#3991506

NO.	TAG	PACKAGE #	LOCATION	SWITCHES		OPTION	FANS CONTROLLED				
				LOCATION	QUANTITY		TYPE	Ø	H.P.	VOLT	FLA
1		SC-11011002-FL	Utility Cabinet Left	03 - Utility Cabinet Left Hood # 1	1 Light 1 Fan	Smart Controls Basic	Exhaust	1	0.750	115	8.9



CAPTIVE WIRE

BOWERS CONSULTING, PA
1620 South MLK, Jr. Avenue - Suite 106
Salisbury, NC 28144
T: 704-630-0075 F: 704-630-0051
NC PE CORPORATION: C-1619
DE PE CORPORATION: 4390
VA PE CORPORATION: 0405001434

"PROFESSIONAL CERTIFICATION"
I hereby certify that these documents were prepared or approved by me, and that I am a duly licensed professional engineer under the laws of the state of Maryland, License No. 41658, expiration date: 02/19/2022.

INFORMATION CONTAINED ON THIS SHEET PROVIDED BY MANUFACTURER

FOOD LION STORE 2560
7514 NORTH POINT ROAD
EDGEMERE, MD 21219
DELI/BAKERY HOOD DETAILS

DRAWING FILE NAME
2560 M4.02_00
RFS JOB #
2019-042
DATE
02/21/2020
M4.02
4 OF 6

Riddick Fiedler Stern
Architecture ■ Planning ■ Interior Design
261 West Bute Street ■ Norfolk, VA 23510 ■ (757) 627-2791

